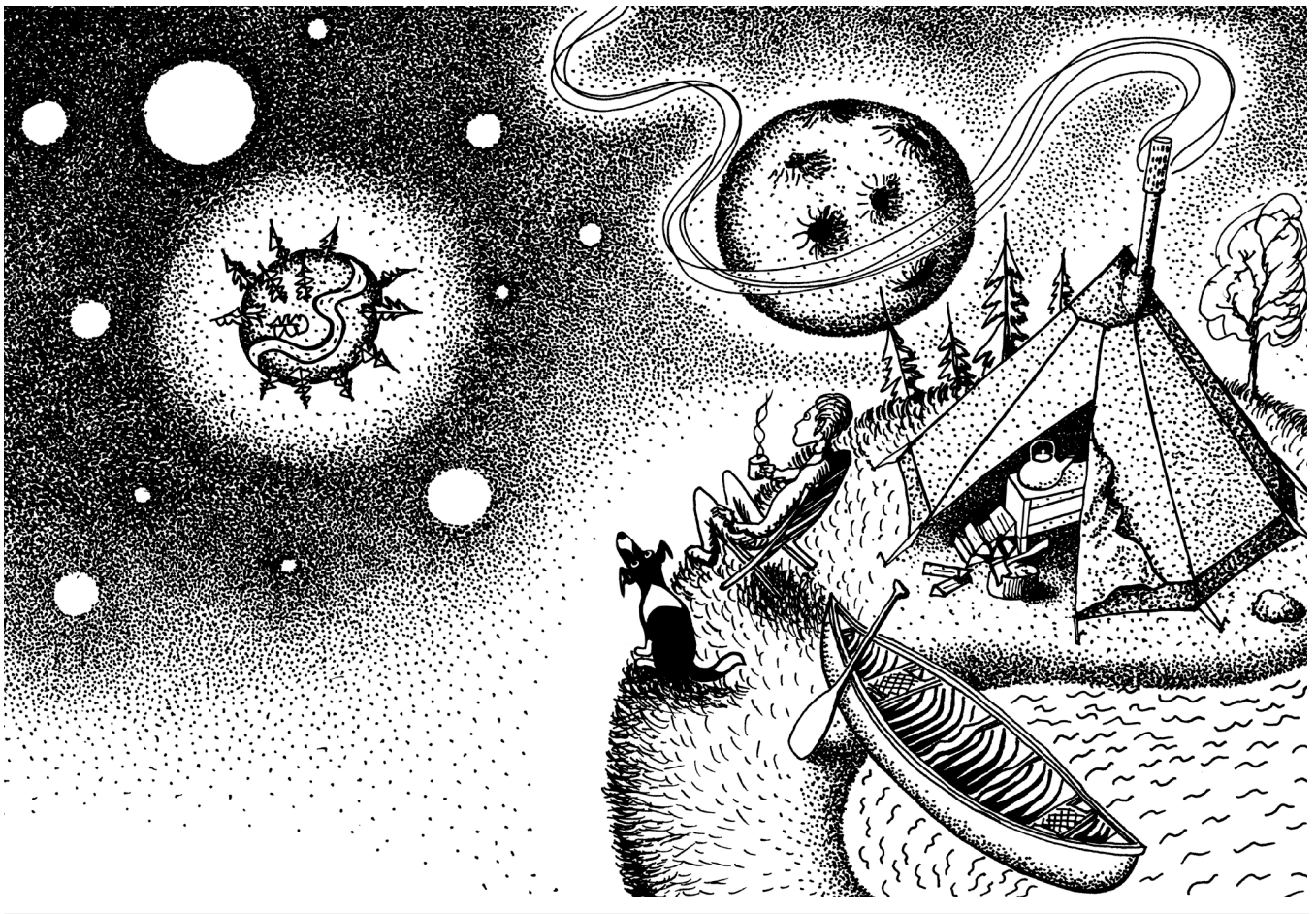


# FIBI-STYLE Tent stove V

## Instructions for use



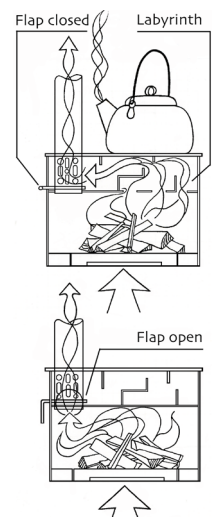
Thank you very much for your decision to buy a FIBI-STYLE tent oven-V. We hope it will bring you much warmth and fire glow and be a good companion at travels and adventures.

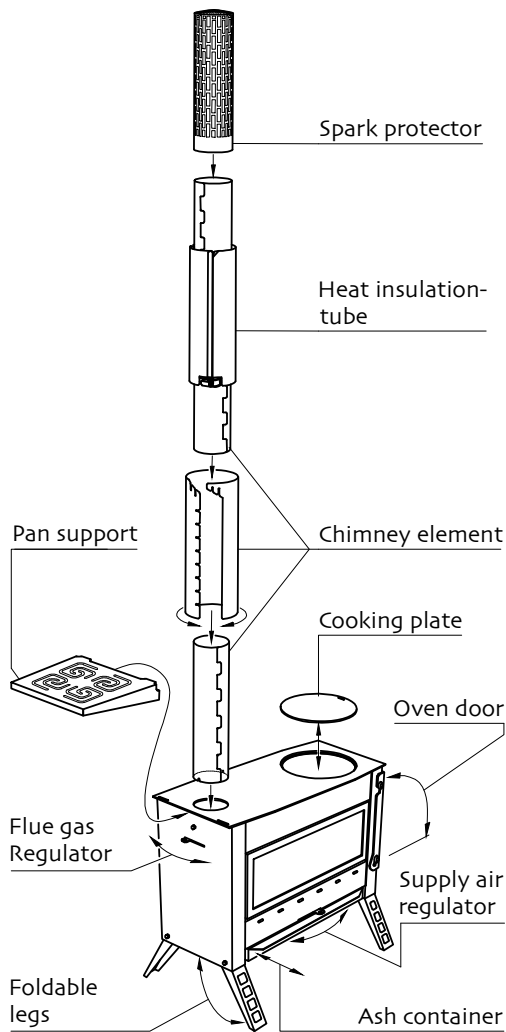
Our tent ovens make the heating of a tent fairly simple, even if temperatures are very low. Furthermore, your stove is perfectly fitted for cooking outdoors. A removable cooking plate enhances the cooking performance and enables to use pots with an uneven bottom as well.

The model-V comes with or without windows, as you choose. If you choose the variant with the two windows, you are able to enjoy the view on the flames and embers. Not only the warmth but the special atmosphere as well will make your tent feel more homely and cosy. A support for pans can be purchased as an accessory part. It can simply be hung on the side wall of the oven. Your tent stove is equipped with the same technical details as the « Swedish stoves » which are built for heating a house. The legs can be folded in for transportation. All the chimney elements, the spark protector and the heat insulation tube can be fitted inside the stove. This way the stove and all its accessory parts can be stowed in the accompanying transport box.

### Technical Details

Similar to our old models we equipped the model V with a variable smoke-gas redirection mechanism. This function allows you to redirect the air stream inside the stove, according to the respective operating modes. The air can either be directed directly to the chimney which assures an optimal air stream during the start of the fire, or it can later be redirected through the « labyrinth » for lesser air stream and therefore the combustion is much slower and your stove will emit more heat. All this can be done by cranking the smoke flap. The consequence is that this stove is extremely economical in firewood consumption and much more effective in terms of heating performance compared to stoves without such a air stream redirection system as well.

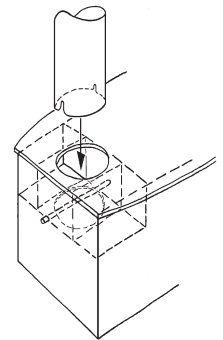




## Assembly

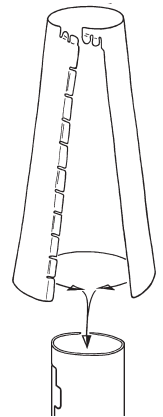
By default, the transport box contains the following parts:

- Stove with inserted fire grate
- Lowermost chimney element
- Rest of the chimney elements (Number according to chimney height)
- Spark protector
- Heat insulation tube
- Cooking plate
- Ash container
- Pan support (optional)



The assembly is fairly simple. First, you take out all the accessory parts and unfold the legs. Now you place the stove on its location in the tent. You may need to put some wood or stones under the legs, if the ground is very soft. When you pitch the tent in the snow you will have to clear the site from snow or you can put a heat insulating plate under your stove so it has solid ground under it.

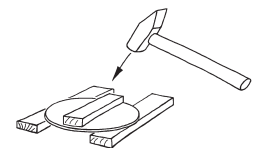
Now you put in the ash drawer as well as the cooking plate. The first chimney element is then put into the fitting hole in the stove so the recess on the end of the tube fits onto the round profile inside the opening. The following chimney parts are put together by the tabs into the slots at the end of each tube. Then you join the flaps on the long edge. You can put the chimney elements together until eye level. The rest of the chimney you put together separately including the heat insulation tube and the spark protector. Then you put the upper part of



the chimney through the opening in the tent and put it onto the lower part. If your tent is very high you will have to secure your chimney onto the tent pole with a wire rope. Now your stove is ready to start a fire.

## Commissioning

Because the sheet metal parts never ever have been hot and glowing it is possible that they will warp a little. This may lead to the necessity to straighten the cooking plate after the first time you use your stove. It can be done by using three pieces of wood and a hammer. If you start a fire for the first time in your tent stove there may be increased smoke development because of the fat and oil residues on the sheet metal.



## Safety

You must use the FIBI-STYLE tent stove V only in tents made of cotton. You have to put your stove onto a non-combustible base. There mustn't be combustible materials 80 cm around the stove. The chimney is to be secured and is only led through the tent fabric with an insulation tube. The stove must never be left unattended while being in use. You are using this product at your own risk. We reject any liability in the event of accidents and property damage.

## Important notes

The stove is made of stainless steel 1.4301 and it is not made for burning stone coal, because the sulphur content of the coal causes pitting in a very short time. Therefore, only wood, wood briquettes and charcoal are to be burnt in this stove.

If you don't use your stove for a longer time period, it is recommended to clean it and maybe apply a little oil onto the sheet metal surfaces for extra protection. It is best to store your stove always dry in its transport box.